



LEXILE FRAMEWORK FOR READING

Lexile measures provide a scientific approach to improve reading.

For more information on how Lexile measures can help improve your students' reading, visit Lexile.com/educators.

WHAT IS THE LEXILE FRAMEWORK?

The Lexile Framework® for Reading is a scientific approach to reading that places both readers and texts on the same measurement scale. About half of all U.S. students receive Lexile® measures from national, state and local assessments.

Lexile measures are represented by a number followed by an “L” (such as “800L”) and range from below OL for beginning readers to above 1600L. Research shows that 1300L or above is the target Lexile measure for students to be ready for college and career in reading.

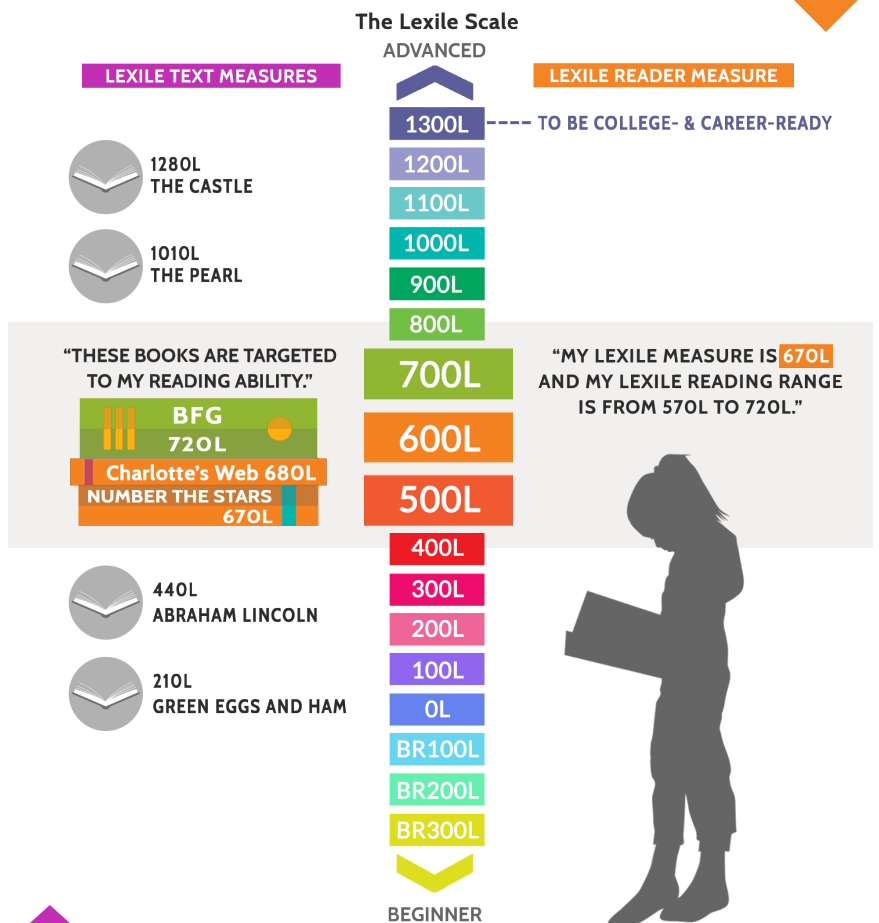
With Lexile measures, you can:

- **Connect** your students with reading materials at the right challenge level.
- **Analyze** instructional materials and plan for instruction.
- **Communicate and engage** with students and parents regarding reading progress.
- **Set goals and monitor** reading growth over time.

LEXILE MEASURES FOR STUDENTS

A Lexile reader measure describes a student’s reading ability. Connecting students with books in their Lexile range – 100L below to 50L above their reported Lexile measure – provides an ideal level of reading challenge.

Sometimes a student’s Lexile measure can vary from test to test. Resources for understanding test score variation and managing multiple student measures are available at Lexile.com/managing-multiple-measures.



LEXILE MEASURES FOR BOOKS

A Lexile text measure tells you how challenging a text is to comprehend. More than 300,000 books in print and over 100 million websites and online books and articles have Lexile text measures.

Featured Free Tools



FIND A BOOK

Find “just right” books that match students’ interests and reading level and build customized vocabulary lists with the PowerV® vocabulary tool.

VISIT FAB.LEXILE.COM



LEXILE ANALYZER®

Evaluate the level of reading materials that have not yet been measured.

VISIT LEXILE.COM/ANALYZER



LEXILE GROWTH PLANNER®

Forecast future reading growth and see if your students are on track to graduate college- and career- ready.

VISIT CCR.LEXILE.COM

LEXILE®, LEXILE FRAMEWORK®, the LEXILE® logo, LEXILE ANALYZER®, LEXILE GROWTH PLANNER® and POWERV® are trademarks of MetaMetrics, Inc., and are registered in the United States and abroad. Copyright © 2018 MetaMetrics, Inc. All rights reserved. MM0066W

CONNECT STUDENTS WITH “JUST RIGHT” READING

Lexile measures provide you with valuable information about students’ abilities as well as text difficulty. Using Lexile measures, students can be matched with reading materials more precisely than grade or age indicators allow. Within a classroom, there will be a wide range of students’ Lexile measures (Lexile.com/educators/grade-range).

TYPICAL READER MEASURES BY GRADE

GRADE	LEXILE READER MEASURES
1	BR120L to 295L
2	170L to 545L
3	415L to 760L
4	635L to 950L
5	770L to 1080L
6	855L to 1165L
7	925L to 1235L
8	985L to 1295L
9	1040L to 1350L
10	1085L to 1400L
11 & 12	1130L to 1440L

When a text’s measure matches a reader’s measure, there is an expected 75 percent comprehension rate. For example, a reader with a Lexile measure of 1000L is expected to comprehend approximately 75 percent of a 1000L book. At a 75 percent comprehension rate, readers should not be frustrated by the text’s difficulty, but should encounter new vocabulary and sentence structures that promote reading growth.

You can check the expected comprehension rates of books for a particular student on Find a Book (fab.lexile.com) by using the “For a Particular Reader” calculator on a book’s detail page. Although a Lexile text measure is based on text complexity alone, the Find a Book tool incorporates subject matter, age and a reader’s interests to further enhance book selection. The Lexile measure of a learner or of a text should not be the only consideration in selecting reading material.

FIND OUT MORE ABOUT BEGINNING READERS

The Lexile scale has been extended for beginning readers and texts. A Beginning Reader (BR) code is given to readers and texts that have measures below OL on the Lexile scale. A Lexile measure of BR100L indicates that the Lexile measure is 100 units below OL. Just like -10 degrees is higher (warmer) than -30 degrees on a thermometer, a BR100L book is more complex than a BR300L book. Find out more about beginning readers and the Lexile scale at Lexile.com/beginning-readers.

COMMUNICATE & ENGAGE WITH STUDENTS & PARENTS

Lexile measures make it easier for you to partner with students and parents in pacing and tracking progress. Parents can use their child’s Lexile measures to connect them to reading materials and resources at Lexile.com/parent-resources.



Want to learn more about the Lexile Framework for Reading?

VISIT LEXILE.COM